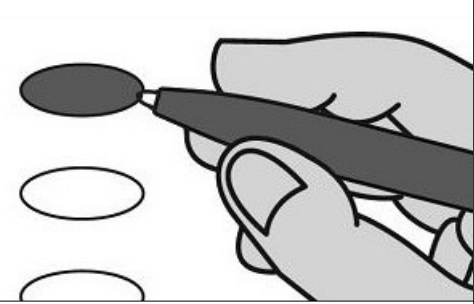


**OFFICIAL BALLOT - CHARLESTON COUNTY, SC
REPUBLICAN PRIMARY
JUNE 14, 2022**

**EMERGENCY/
PROVISIONAL
JOHNS ISLAND 2
REP B117**

Instructions

Marking Your Ballot



- To vote, darken the oval beside your choice using a blue or black pen. Do not make marks outside the oval.
- Vote for one candidate in each contest unless otherwise indicated.
- You do not have to vote in every contest.
- To change or correct your ballot, request a replacement from the election official.

**Governor
Vote for One**

- Henry McMaster
- Harrison Musselwhite

**Secretary of State
Vote for One**

- Keith Blandford
- Mark Hammond

**Attorney General
Vote for One**

- Lauren Martel
- Alan Wilson

**State Superintendent of Education
Vote for One**

- Travis Bedson
- Bryan Chapman
- Kizzi Gibson
- Lynda Leventis-Wells
- Kathy Maness
- Ellen Weaver

**Commissioner of Agriculture
Vote for One**

- Bill Bledsoe
- Bob Rozier
- Hugh Weathers

**U.S. House of Representatives
District 1
Vote for One**

- Katie Arrington
- Nancy Mace
- Lynz Piper-Loomis

Advisory Questions

Question 1

Should people have the right to register with the political party of their choice when they register to vote?

- Yes, In Favor of the Question
- No, Opposed to the Question

Question 2

Should candidates for local school boards be able to run as a candidate of the political party of their choice, just like candidates for other elected offices?

- Yes, In Favor of the Question
- No, Opposed to the Question

Question 3

In a situation where there is more than one person responsible for damages in a lawsuit, do you support changing South Carolina law so that each person should pay damages based on that person's actual share of fault?

- Yes, In Favor of the Question
- No, Opposed to the Question

SAMPLE